



Gausium Beetle

Working smarter and easier with
Gausium service robots

Saxon
Solution Manager
2025.6.17



Contents



1. Basic Information
2. Key Features
3. Applicable Scenarios
4. Accessories (Charging Dock)
5. Maintenance
6. Demos

Contents



1. Basic Information

2. Key Features

3. Applicable Scenarios

4. Accessories (Charging Dock)

5. Maintenance

6. Demos



Basic Information



- The Beetle is a Sweeper on sale for overseas market.

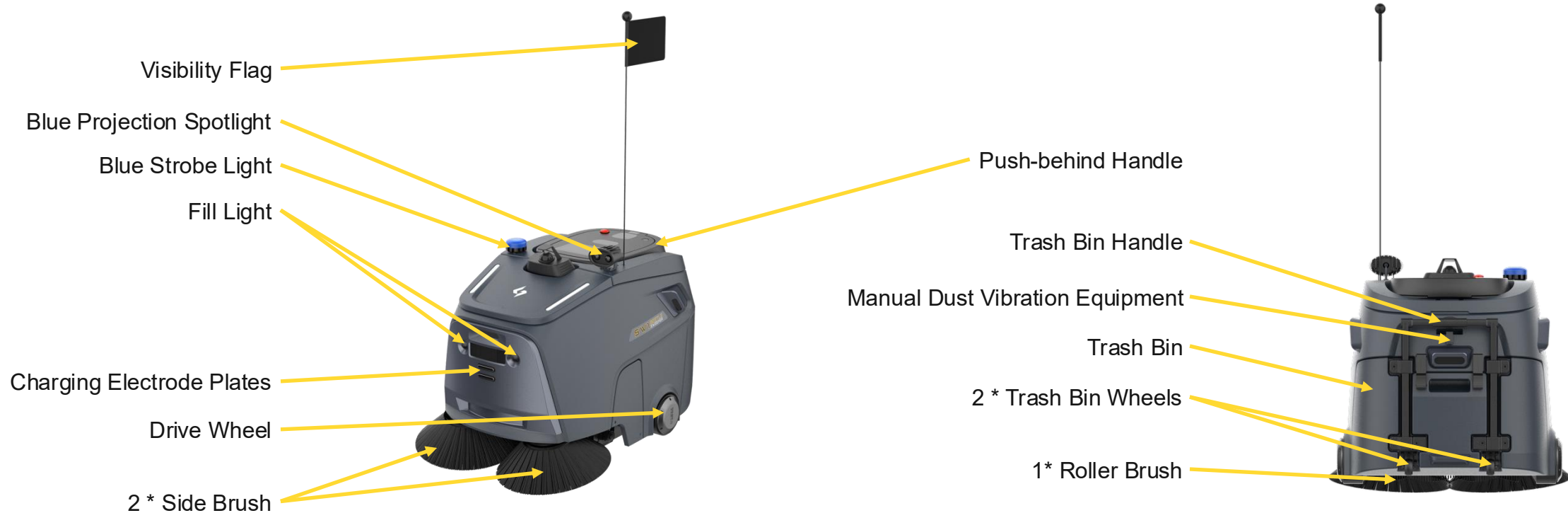
ITEM		Beetle Pro
Basic Information	Weight	112
	Size	L960×W650×H680 (without side brush and flag) L990×W750×H680 (with side brush and without flag)
Component	Blue Strobe Light	Yes
	Blue Forward Spotlight	Yes
	Visibility Flag	Yes
Electrical Parameter	Battery Capacity (Ah)	60
	Charging Time (h)	2.5
	Charging Dock	Standard
	Runtime (h)	5



Beetle **Pro** Version



Basic Information - Working Principle



How the Beetle Sweeps the floor:

1. As the Beetle moves forward, **two rotating side brushes** sweep debris inward beneath the robot.
2. A **high-speed roller brush** then lifts the debris and directs it into the **sealed trash bin**, effectively collecting both large debris and fine dust.
3. Simultaneously, the **powerful suction motor** operates at **1,320 m³/h airflow**, while a **large-area HEPA filter** captures fine dust, ensuring minimal airborne particles for a cleaner environment.

Contents



1. Basic Information

2. Key Features

3. Applicable Scenarios

4. Accessories (Charging Dock)

5. Maintenance

6. Demos



Key Features



1,320m³/h Airflow Power

3M² HEPA Size

4X Less Airborne Dust

Effective Dust Control

Warehouses & Logistics – Removes floor dust, reducing airborne particles and surface dust on goods.



Key Features



45L Trash Bin

5-8h* Runtime

0cm Edge Cleaning

Sweeps Everything, Anywhere

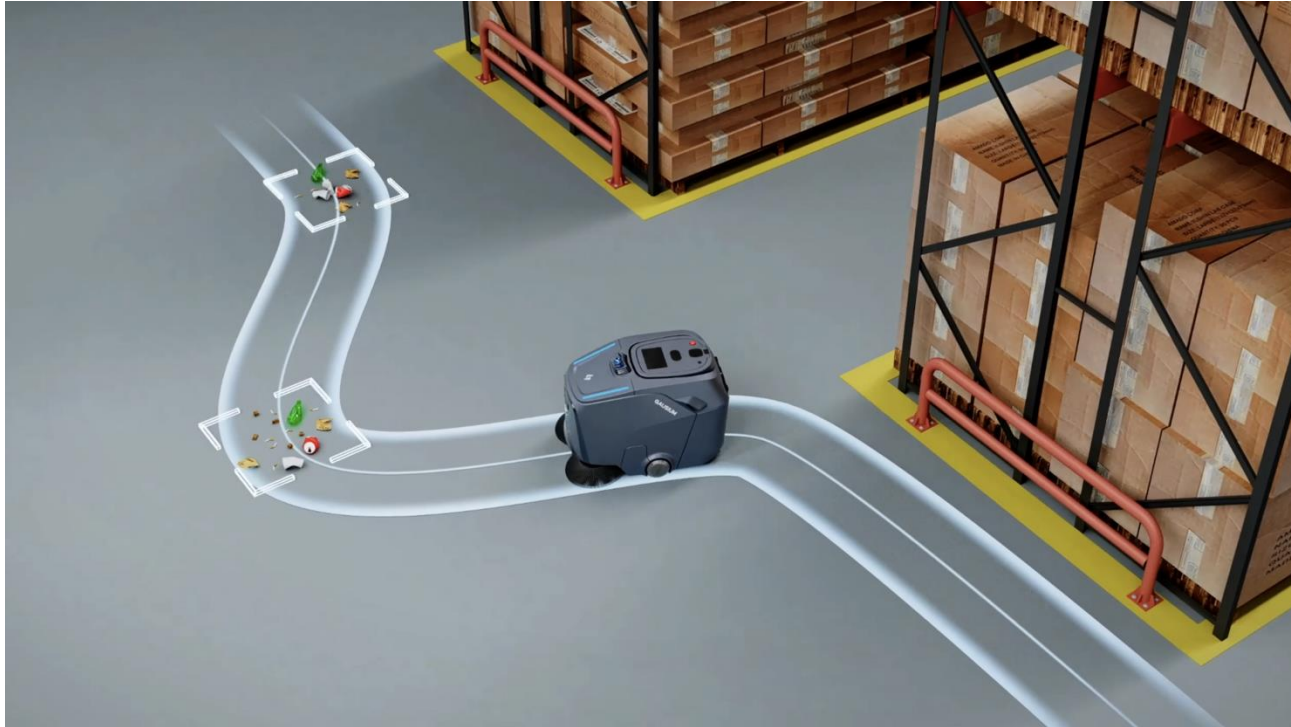
Industrial Cleaning – Handles all types of debris in a single pass.



**8h runtime for when robot is in spot cleaning mode*



Key Features



4X Higher Efficiency

40,000 sqm* for one night

AI-Powered Cleaning

Smarter, More Human-Like Cleaning – Thorough, precise, and always on track.

* 40,000 sqm for when operating in spot cleaning mode



Key Features



Sweeping First

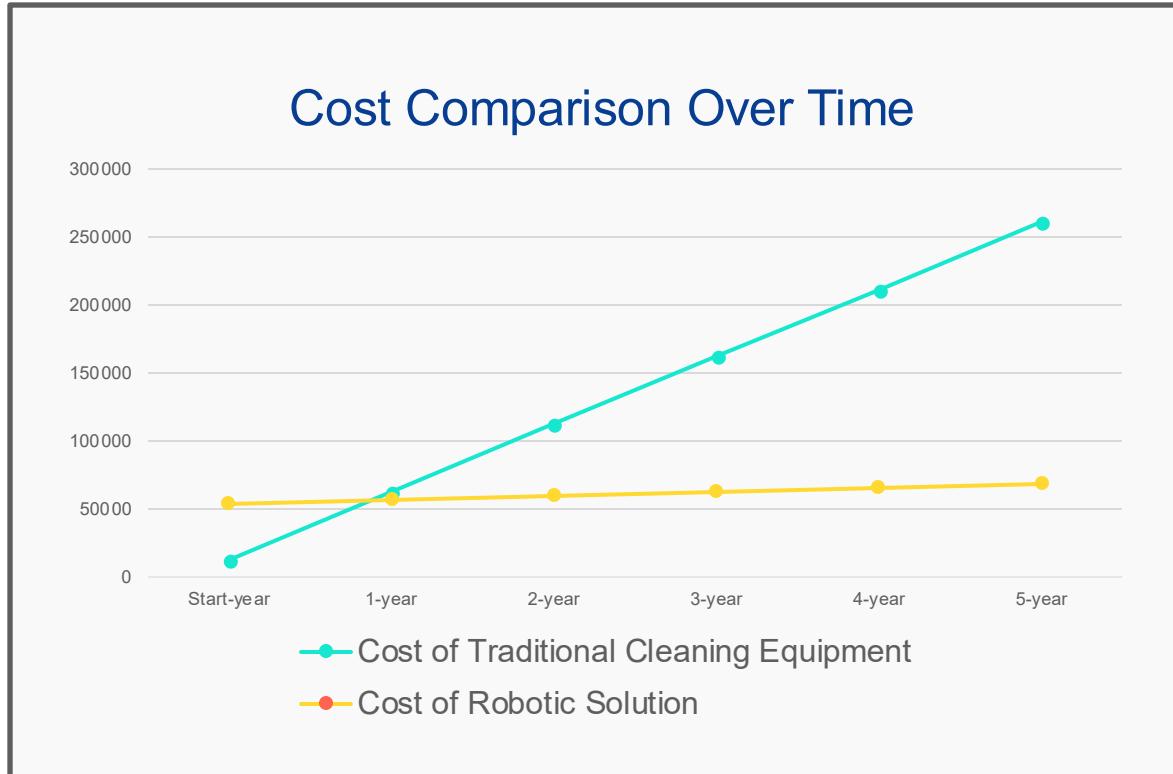
Scrubbing Follows

No Dust Can Hide

Sweeping & Scrubbing Combo A proven, effective method for removing debris, dirt, and dust.



Key Features



<1-Year Break-even

>187% 2-Year ROI

>381% 5-Year ROI

Cost-Effective **Efficient & Affordable** – Lowers cleaning expenses while maximizing efficiency.

Assumptions:

- Cleaner's hourly wage: **€20**
- Manual cleaning efficiency: **1,000 sqm/hour**
- Cleanable aisle area: **8,000 sqm**
- Traditional sweeper price: **€5,000**
- Workdays per year: **260**
- Warehouse/factory size: **20,000 sqm**
- Sweeping everyday, scrubbing once a week
- Traditional scrubber dryer price: **€7,000**

Features & Functions – Beetle Pro Version



3D LiDAR

Excellent navigation & obstacle avoidance performance



Powerful Sweeping

Captures fine dust to large debris in one pass



Ultra Long Runtime

45L trash bin, 60Ah battery for longer cleaning cycles



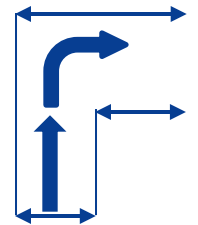
Edge-to-Edge Cleaning

Side brushes reach every corner, ensuring no dust is missed out



Compact & Agile

750mm cleaning width, 750mm pass width for tight spaces, U-turns in just 1250mm



Active Operation Alerts

Features a visibility flag, blue strobe light, and forward projection light to ensure it's seen during operation



Competitive Edge – Beetle



GS

4X More Airflow Power

3M² HEPA Size

4X Less Airborne Dust

3D LiDAR, never get lost

45L Big Trash Bin

Others

300+m³ Airflow Power

0.5M² HEPA Size

More Airborne Dust

2D LiDAR, easily get lost

35L Trash Bin

Contents



1. Basic Information

2. Key Features

3. Applicable Scenarios

4. Accessories (Charging Dock)

5. Maintenance

6. Demos



Applicable Scenario Types



Warehouse



Logistics Center



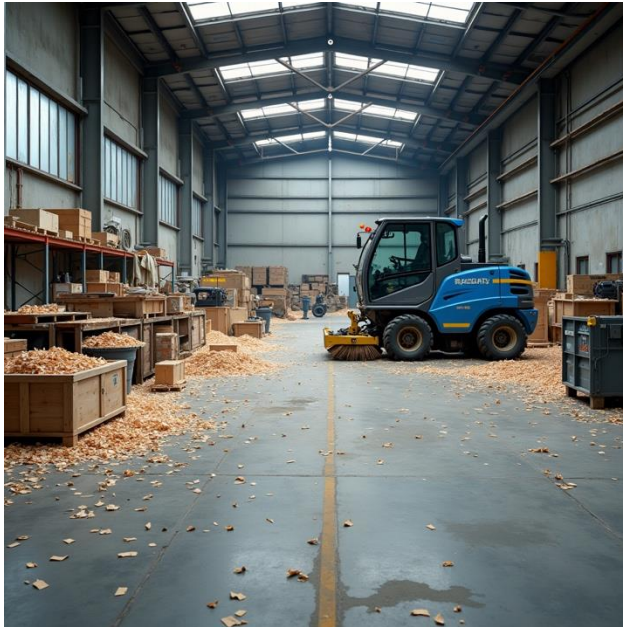
Factory

Beetle: Powerful Industrial Sweeper

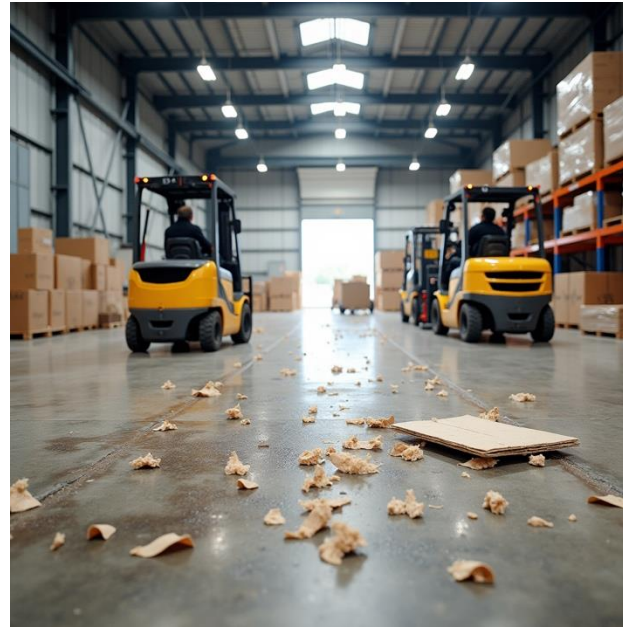
Designed for **warehouses, logistics centers, and factories**, Beetle sweeps up **large debris and fine dust** with ease. Its **high-power suction motor** and **advanced dust control** ensure a spotless clean with **zero airborne dust**. With a **sealed trash bin** and **precision brushes**, Beetle keeps industrial spaces dust-free and pristine.



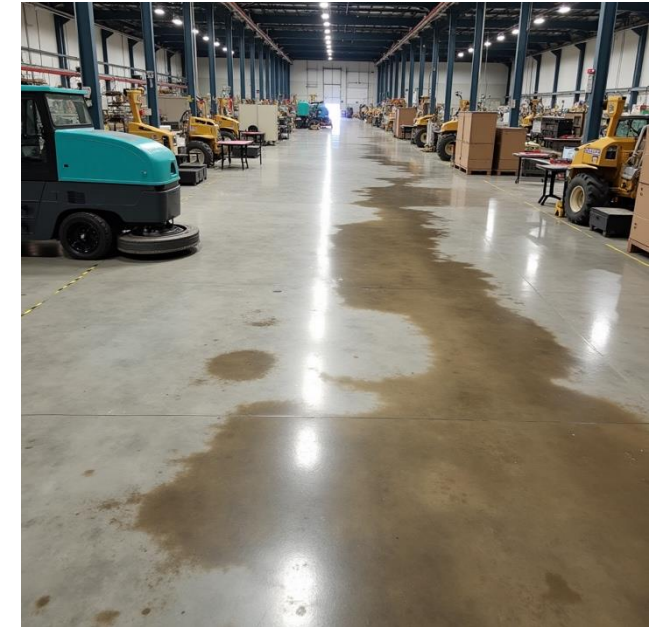
Applicable Scenario Types



Large warehouse with dry big debris, need **dry cleaning (sweeping only)**



Warehouse with dry debris and fine dust, need both **dry sweeping and wet scrubbing**



Large factories with oil stains or stubborn stains, need **dry sweeping first and then deep scrubbing**

Our Solution





What Our Sweeper Can Clean



Plastic Bottles



Disposable Cups



Crumpled Paper



Plastic Bags



Sawdust



Screws, Nuts



Metal Shavings



Dry Food Waste (e.g., nutshell, etc.)



Recommended Combo – Cleanable area < 8,000 sqm



Recommendation Combo: **1 * Beetle + 1 * Charging Dock.**

A single **Beetle** cleans **1,500 sqm/h¹** and runs for **5 hours per charge**, covering up to **7,500 sqm per shift**—suitable for facilities with a total size of **around 20,000 sqm²**.



¹ The 1,500 m²/h rate is based on operation in relatively open areas. Actual performance may vary depending on the environment.

² The estimate assumes that aisle areas account for roughly 40% of the total space in typical factories or warehouses.



Recommended Combo – Cleanable area > 8,000 sqm



Recommendation Combo:

Multiple Beetle + Charging Dock.

You can also deploy multiple Beetles with charging docks to **efficiently cover larger spaces, such as aisle areas exceeding 7,500 sqm.** By dividing the warehouse or factory into separate regions, multiple robots can operate simultaneously, ensuring faster and more efficient cleaning.





Product Value for Industrial Scenario



Pain Points



Large cleaning areas & High Labor Costs



Dust & debris affecting machinery & goods



Various Obstacles & Dynamic Environment

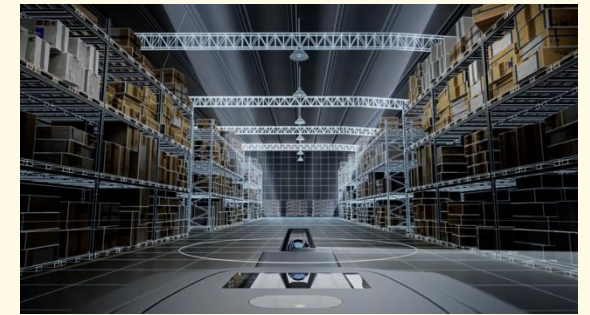
Selling Points



Maximum Efficiency, Minimum Cost



Cleans Everything, Anywhere



Best-in-Class Navigation & Obstacle Avoidance

Contents



1. Basic Information

2. Key Features

3. Applicable Scenarios

4. Accessories (Charging Dock)

5. Maintenance

6. Demos

Specifications – Charging Dock for Beetle



CD-04 Pro

Model		CD-04 pro
Name		Charging Dock
Size (mm)		350(L)*200(W)*690(H)
Working Environment	Working Temperature	0-45°C
	Working Humidity	20%-75%RH
Storage Environment	Storage Temperature	(-30°C-70°C)
	Storage Humidity	20%-95%RH
Rated Power Input	Input Voltage (AC)	100-240V
	Input Current (AC)	10A
	Input Power	1000W
Rated Power Output	Output Voltage (DC)	28V
	Output Current (DC)	25A
	Output Power	735W
Installation Requirement	Socket	Local standard
	Min. installation space (mm)	1600(L)*800(W)*1000(H)
Light Indicator		Yes

Component Introduction – Charging Dock for Beetle



Light indicator

Infrared sensor

Charging electrode plate

Manual charging socket



Support structure

Pedestal

Contents



1. Basic Information

2. Key Features

3. Applicable Scenarios

4. Accessories (Charging Dock)

5. Maintenance

6. Demos



Maintenance – Easy to Maintain

1

To empty the trash bin, release the buckles, pull it out, use the wheels to transport it to the designated location, and dispose of the trash.

2

Beetle features a **quick-release detachable trash bin**, allowing for effortless emptying—simply unlock, remove, and slide it back into place.





Maintenance – Easy to Maintain

3

The **detachable, magnetically attached side brush** allows for quick and easy maintenance.

4

Easily pull out the roller brush from the side, remove any stuck hairs or debris, and reinstall it.



Contents



1. Basic Information

2. Key Features

3. Applicable Scenarios

4. Accessories (Charging Dock)

5. Maintenance

6. Demos

Demo Video



BEETLE

Agile Sweeper Dust-Free Pioneer

Robolution by Gausium





Explore . Innovate . Inspire